

Introducing

Brava™

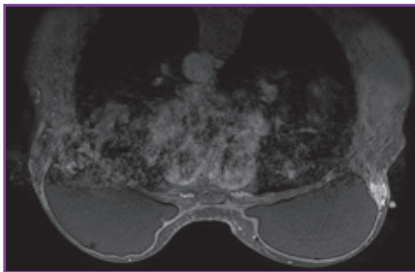
skin markers for breast MRI

By providing a line of communication between patient, technologist and radiologist, Brava skin markers serve as an extremely valuable tool within breast MRI.

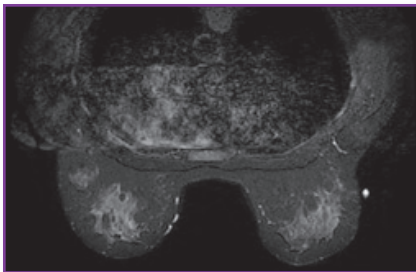


Most facilities performing breast MRI currently identify areas of interest through the use of an external skin marker. By using a Brava skin marker on the breast to identify areas of interest such as surgical scars, biopsy sites, palpable masses or nipples, the radiologist is provided with information related to a specific area that otherwise may not have been as easily identified.

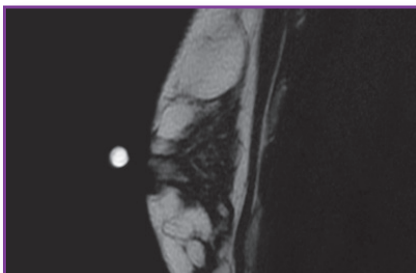
Designed Specifically for use in Breast MRI, Brava skin markers...



PALPABLE AREAS



SURGICAL SCARS



NIPPLES

- **Offer Options**
With 2 varieties and 4 sizes to choose from there is a Brava skin marker for all of your breast MRI needs.
- **Help to Reduce Patient Anxiety**
The feminine design and soft, soothing colors can calm the patient while also helping to take their mind off the exam.
- **Provide a Professional Alternative**
Eliminates taping a mustard pack or vitamin e capsule to such a sensitive area as the breast.
- **Add Precision**
Whether you need the marker to image on 2 or 9 slices, there is a Brava skin marker to assist technologists in communicating the exact area of interest on the breast.
- **Are Easy to Use**
Simply peel and stick. No more fumbling with tape or worrying about a vitamin e capsule melting on the breast.
- **Eliminate Indentation**
Brava skin markers lay on top of a self adhesive label, eliminating indentation caused by older methods of marking.
- **Are Unmistakable**
Bright and consistent imaging on every sequence allows for unmistakable communication between patient, technologist, and radiologist.

Only from BEEKLEY

Introducing

Brava™

skin markers for breast MRI

By providing a line of communication between patient, technologist and radiologist, Brava skin markers serve as an extremely valuable tool within breast MRI.



Brava™
order code: 710
contents per box: 40

- 6mm Radiance™ filled pellet
- for marking nipples and other precise areas on the breast



Brava™
order code: 712
contents per box: 40

- 1.5cm Radiance™ filled tubes
- for marking palpable masses and surgical scans



Brava™
order code: 711
contents per box: 40

- .75 cm Radiance™ filled packets
- for marking nipples and palpable masses



Brava™
order code: 713
contents per box: 40

- 1.75cm Radiance™ filled packet
- for marking palpable masses and surgical scans

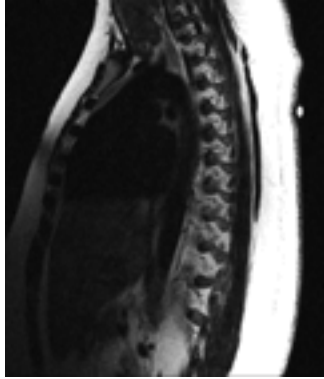
Contact your Beekley Distributor today to place an order.

**To locate a Distributor in your area,
visit the “contact us” section of www.beekley.com.**

MR-SPOTS:

Beekley MR-SPOTS® **image on all MRI sequences** so that areas of interest are clearly identified on the scan.

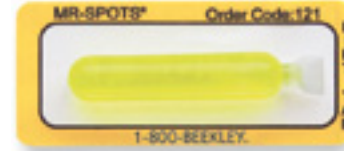
MR-SPOTS® tubes provide a sharp, distinct image on film while MR-SPOTS packets help reduce marker indentation.



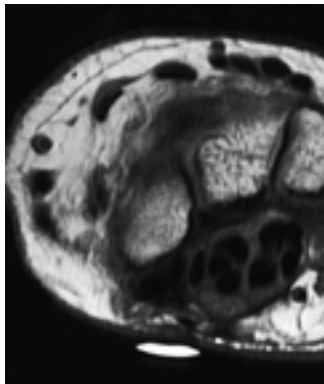
3.0cm Radiance® filled tube



MR-SPOTS®
order code: 122
contents per box: 40
1.5cm Radiance® filled tube
perfect for extremities, soft tissue masses, and breast MRI



MR-SPOTS®
order code: 121
contents per box: 40
3.0cm Radiance filled tube
perfect for thoracic spines and larger areas of interest



1.75cm Radiance filled packet



MR-SPOTS®
order code: 185
contents per box: 40
1.75cm Radiance filled packet
perfect for extremities, soft tissue masses, and breast MRI
designed for optimum patient comfort



MR-SPOTS®
order code: 184
contents per box: 40
5.0cm Radiance filled packet
perfect for thoracic spines and larger areas of interest
designed for optimum patient comfort