

PanOptic™ Ophthalmoscope

Developed and patented by Welch Allyn—creator of the world’s first hand-held direct-illuminating ophthalmoscope—the PanOptic Ophthalmoscope is a breakthrough concept in veterinary ophthalmology. Thanks to an innovative, proprietary optical design known as Axial PointSource™ Optics, this new ophthalmoscope allows all veterinarians to easily examine the fundus. Just look at all the PanOptic Ophthalmoscope offers:

- Fast, easy entry into small, undilated pupils
- 5X larger view of the fundus vs. standard ophthalmoscopes in an undilated eye
- 25° field of view versus the 5° field of view of standard ophthalmoscopes
- Greater working distance improves comfort for practitioner
- Complete compatibility with existing Welch Allyn 3.5 V power sources
- Six inches from veterinarian to patient’s eye



#11800-V PanOptic Ophthalmoscope with 3 spot sizes: micro, small and large; with add-on magnifying lens

#11810 PanOptic Ophthalmoscope with 3 spot sizes: micro, small and large; slit aperture; red-free filter; and half-moon aperture

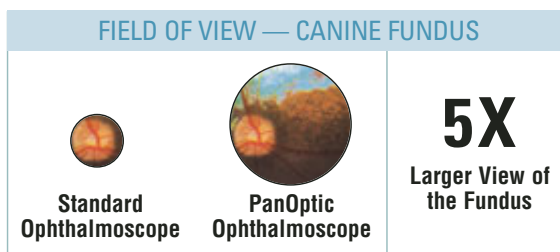
#11820 PanOptic Ophthalmoscope with 3 spot sizes: micro, small and large; slit aperture; red-free filter; cobalt blue with add-on magnifying lens

#11870 Patient eyecups (Package of 5 Reusable Eyecups)

#03800-U Halogen HPX™ replacement lamp

#11875 Corneal viewing lens

#05866-U Diagnostic set carrying case (hard)



1. Micro spot aperture: Allows quick visual entry in very small, undilated pupils.



2. Small aperture: Provides easier view of fundus through undilated pupil.



3. Large aperture: Standard aperture for dilated pupil and general examination of the eye.



5. Cobalt filter: Blue filter used with fluorescein dye permits easy viewing of small lesions, abrasions, and foreign objects.



6. Slit: Used to determine various levels of lesions and tumors.



7. Red-free filter: Excludes red rays from examination field for easy identification of veins, arteries, and nerve fibers.