



**FREESTANDING CABINETS**

**MODEL 7953SS (KAY) CABINET** is a 30" wide cabinet that divides upper and lower sections. The upper section consists of a glass door and three 14-1/2" glass shelves, adjustable every 1/2". Locking door latch secures contents. Bottom cabinet has a solid stainless door and houses one removable stainless steel shelf. Cabinet is mounted on four legs with stainless steel glides. Reconfigure this cabinet with two solid doors, all stainless steel shelving and a sloping top or casters to suit your requirements.



7953SS

Model No.	Part No.	Width	Height	Depth	Shelves
7953SS	1517953000	30" (76.20)	58" (147.32)	16" (40.64)	3 glass, 1 SS
60" (152.40) w/ casters					

**MATERIALS** - Stainless Steel, Type 300 Series, nickel-bearing, 1/4" (0.64) clear tempered sheet glass.

**GAUGES** - Sides, backs, tops, bottoms, shelf-18 gauge. Doors and drawers-20 gauge. Legs-12 gauge.

**CONSTRUCTION** - Cabinet consists of separated upper and lower storage compartments with seamless welded face, doubled front edges. Lower cabinet is mounted on four offset type legs welded to bottom corners, mounted on stainless steel glides. A counter weight is fastened underneath at bottom rear of cabinet. Upper compartment furnished with glass paneled door of double shell design with outer shell formed to receive rubber cushioned glass panel held in place by removable retaining strips. Door fitted with lock handle and three-way latching device engaging at top, side and bottom simultaneously. Full-length stainless steel stripping welded to back wall and fastened to front edges of compartment permits shelf height adjustment every 1/2" (1.27). Three adjustable glass shelves furnished. Lower compartment furnished with one double-walled door fitted with handle, hung on semi-concealed stainless steel hinges closing against rabbeted frame of cabinet. The cabinet is furnished with one removable stainless steel shelf.

**WELDING** - All welding accomplished by heli-arc method. All exposed welds ground smooth.

**FINISH** - All exposed stainless steel surfaces are polished to a satin finish.

**OPTIONS** - Casters, stainless steel shelves for upper compartment, sloping top on upper cabinet. Solid stainless steel upper door.

**MODEL 7956SS (KENNEDY) CABINET** is a 36" wide treatment and storage cabinet with two distinct sections separated by a stainless steel work surface. Narcotic locker and three glass shelves in the upper section independently lock. The bottom section consists of three 7" deep drawers, closed-door compartment with one stainless steel shelf. Cabinet is mounted on four legs with stainless steel glides. Reconfigure this cabinet with all stainless steel shelves, solid doors, sloping top for easy cleaning and casters.



7956SS

Model No.	Part No.	Width	Height	Depth	Shelves
7956SS	1527956000	36" upper (91.44)	76.5" (194.31)	8" (20.32)	3 glass
		36" lower (91.44)	34" (87.36)	16" (40.64)	1 SS

**MATERIALS** - Stainless Steel, Type 300 Series, nickel-bearing, 1/4" (0.64) clear tempered sheet glass.

**GAUGES** - Sides, backs, tops, bottoms, shelf-18 gauge. Doors and drawers-20 gauge. Legs-12 gauge.

**CONSTRUCTION** - Cabinet consists of separate upper and lower compartments with seamless welded faces and doubled front edges. Cabinet is mounted on four stainless steel glide equipped offset legs, welded to bottom corners. Upper compartment is provided with glass paneled doors of double shell design formed to hold a rubber gasketed glass panel. Right hand door equipped with locking knob and three way latching, left hand door with dummy knob and roller catch, operating on semi-concealed stainless steel hinges. Three glass shelves, with all edges ground smooth and polished, adjusts on 1/2" (1.27) increments on full height stripping welded to back and front of cabinet. An independently locked narcotic cabinet, 13-1/4" (33.65) x 5" (12.70) x 7-3/4" (19.68) with double walled door, is welded to the bottom, back and side of compartment. Lower compartment is furnished with one double pan door with bar pull hung on semi-concealed stainless steel hinges, and three half width, full depth, 7" (17.78) deep drawers, with channeled edges and horizontally coved intersections, welded to drawer heads fitted with die-cast aluminum bar pulls. Slides with integral stops and ball bearing rollers are welded to drawer sides, with mating body slides secured to the cabinet interior. Cupboard equipped with one removable stainless steel shelf. Upper and lower sections are joined together by four supports, two each at front and rear edges of the upper cabinet. Front supports are 1-1/4" (3.18) square stainless steel tubing and back supports concealed by the backsplash of the stainless steel base cabinet top.

**WELDING** - Welding is accomplished by heli-arc method. All exposed welds ground smooth.

**FINISH** - Exposed surfaces are free from pit marks, weld seams and scale, and polished to a satin finish.

**OPTIONS** - Casters, stainless steel shelves for upper compartment, sloping top.

**NOTE:** Metric dimensions are shown in centimeters. Specifications may be improved and dimensions changed without prior notice. Weights may vary depending upon caster configurations.



**MODELS 7970SS AND 7971SS (PAUL) INSTRUMENT AND SUPPLY CABINETS** provide maximum storage on five polished glass or stainless steel shelves. Adjustment of shelves every 1/2". Sloping top prevents dust collection. Locking door latch secures contents. Three-inch swivel casters, two with brakes. Optional stainless steel doors, glides.

Model No.	Part No.	Width	Height	Depth	Shelves
7970SS	1537970000	35-5/8" (90.49)	79-1/4" (201.30)	16" (40.64)	5 glass
7970SS-1	1537970002	35-5/8" (90.49)	79-1/4" (201.30)	16" (40.64)	5 stainless
7971SS	1537971000	47-5/8"(120.97)	79-1/4" (201.30)	16" (40.64)	5 glass
7971SS-1	1537971002	47-5/8"(120.97)	79-1/4" (201.30)	16" (40.64)	5 stainless



**MODELS 7959SS AND 7960SS (WALTER) CABINETS** are for storing endoscopy equipment, large instruments or other equipment on its removable stainless pegboard. Sloping top prevents dust collection. Choose from solid stainless steel doors or glass doors (shown). Locking door latch secures contents. Mounted on four legs with stainless steel glides. Optional casters, built-in unit with recessing trim available.

Model No.	Part No.	Width	Height	Depth	Feature
7959SS	1537959000	35-5/8" (90.49)	76" (193.04) w/ glides 79-1/4" (201.30) w/ casters	16" (40.64)	pegboard
7960SS	1537960000	47-5/8"(120.97)	76" (193.04) w/ glides 79-1/4" (201.30) w/ casters	16" (40.64)	pegboard

**MODELS 7970SS AND 7971SS AND MODELS 7959SS AND 7960SS CABINETS SPECIFICATIONS**

**MATERIALS** - Stainless steel, Type 300 Series, nickel-bearing, 1/4" (0.64) clear tempered sheet glass.

**GAUGES** - Body, outer doorframes and sloping tops-18 gauge. Door inserts-20 gauge. Legs-12 gauge.

**CONSTRUCTION** - Cabinet consists of a storage compartment with a seamless welded face, doubled front edges and a sloping top. Cabinet is mounted on four offset type legs on casters, welded into the bottom corners, with counterweight fastened under the bottom rear for doors in open position. Two glass-paneled doors, of double shell design, fit the rabbeted frame of the cabinet and hinge on three semi-concealed stainless steel hinges each. Outer frame is one piece, die formed, to receive a rubber gasketed glass panel held in place by removable interior retaining strips. Right hand door is fitted with a locking handle and three point latching, and the left hand door with a dummy knob and spring loaded nylon roller catches. Cabinet interior consists of either five glass shelves, adjustable in 1/2" (1.27) increments on full-height, slotted-shelf stripping welded to the rear and side walls (Paul models only), or an 18-gauge, stainless-steel, full-height-and-width pegboard, fastened to three channels and welded to the inside back wall (Walter models only).

**WELDING** - Welding is accomplished by heli-arc method. All exposed welds ground smooth.

**FINISH** - Exposed surfaces are free from pit marks, weld seams and scale, and polished to a satin finish.

**CASTERS** - 3" (7.62) ball bearing swivel type.

**OPTIONS** - Glides, stainless steel shelves, solid doors, recessing flanges for built-in units.

**NOTE:** Metric dimensions are shown in centimeters. Specifications may be improved and dimensions changed without prior notice. Weights may vary depending upon caster configurations.



## BASE CABINETS

**MATERIALS** - Stainless Steel, Type 300 Series, nickel-bearing.

**GAUGES** - Sides, bottom, rabbets, outer door pans, top railing, shelves - 18 gauge. Recessed base - 16 gauge. Drawers, back panels, inner door panels - 20 gauge.

**CONSTRUCTION** - Cabinets are constructed as complete and separate units, independent of adjacent units or additional components for rigidity or stability. Double walled drawers and doors close flush with the cabinet face to present a neat, clean appearance. Bottom of cabinet is fitted with a channel shaped base. Gussets with leveling bolts are welded into the corners accessible through button-covered holes punched in the cabinet bottoms. (Base is omitted when installation on masonry bases is specified). Attachment affects a toe space of approximately 3" x 4" high (7.62 x 10.16).

Doors are of double wall, telescoping pan construction, fitting into the rabbeted frame of the cabinet, and hung on semi-concealed, stainless steel hinges. Doors are equipped with die-cast aluminum bar pulls and spring activated nylon roller catches. Drawers are fabricated of one-piece, horizontally covered bodies mating with pan shaped, chamfered edged outer head, to form a double pan front, through which die cast aluminum bar pulls are secured. Drawers operate on ball bearing roller slides with full extension. Shelves are fabricated with channel shaped and flanged edges on all four sides and are adjustable on 1/2" (1.27) centers.

**All base cabinets are 22" deep.** Single cabinets are also available in 21-1/8" width. Double-door cabinets are also available in 29" and 41" widths—consult factory. Countertops must be ordered separately—consult factory. Custom cabinets available on request.

**BLICKMAN BASE CABINETS** offer double walled solid doors for added strength and sound deadening for optimal performance.

Model No.	Part No.	Width	Height	Cupboard Shelves	Drawer Length	Drawer Height	Drawer Depth
AA18HS	2012118000	18-1/8" (46.04)	35-3/4" (90.81)	1	0		
AA24HS	2012224000	24-1/8" (61.28)	35-3/4" (90.81)	1	0		
AB18HS	2012218000	18-1/8" (46.04)	35-3/4" (90.81)	1	14-1/8" (35.88)	6-3/16" (15.72)	18-1/8" (46.04)
AB24HS	2012124000	24-1/8" (61.28)	35-3/4" (90.81)	1	20-1/8" (51.12)	6-3/16" (15.72)	18-1/8" (46.04)
AC18HS	2012218001	18-1/8" (46.04)	35-3/4" (90.81)	0	Fixed Panel with Louvres		
AC24HS	2012224001	24-1/8" (61.28)	35-3/4" (90.81)	0	Fixed Panel with Louvres		
AE18HS	2012318000	18-1/8" (46.04)	35-3/4" (90.81)	0	14-1/8" (35.88)	6-3/16" (15.72)	18-1/8" (46.04)
AE24HS	2012324000	24-1/8" (61.28)	35-3/4" (90.81)	0	20-1/8" (51.12)	6-3/16" (15.72)	18-1/8" (46.04)
AJ18HS	2012518000	18-1/8" (46.04)	35-3/4" (90.81)	2		Open	
AJ24HS	2012524000	24-1/8" (61.28)	35-3/4" (90.81)	2		Open	
AJ35HS	2012535000	35" (88.90)	35-3/4" (90.81)	2		Open	
AJ47HS	2012547000	47" (119.38)	35-3/4" (90.81)	2		Open	
AS18HS	2012718000	18-1/8" (46.04)	35-3/4" (90.81)	0	14-1/8" (35.88)	6-3/16" (15.72)	18-1/8" (46.04)
AS24HS	2012724000	24-1/8" (61.28)	35-3/4" (90.81)	0	14-1/8" (35.88)	13-1/4" (33.66)	18-1/8" (46.04)
AS24HS	2012724000	24-1/8" (61.28)	35-3/4" (90.81)	0	20-1/8" (51.12)	6-3/16" (15.72)	18-1/8" (46.04)
AS24HS	2012724000	24-1/8" (61.28)	35-3/4" (90.81)	0	20-1/8" (51.12)	13-1/4" (33.66)	18-1/8" (46.04)
DA35HS	2013235200	35" (88.90)	35-3/4" (90.81)	1	0		
DA47HS	2013247200	47" (119.38)	35-3/4" (90.81)	1	0		
DB35HS	2013235001	35" (88.90)	35-3/4" (90.81)	0	Fixed Panel with Louvres		
DB47HS	2013247000	47" (119.38)	35-3/4" (90.81)	0	Fixed Panel with Louvres		
DC35HS	2013235001	35" (88.90)	35-3/4" (90.81)	1	31" (78.74)	6-3/16" (15.72)	18-1/8" (46.04)
DC47HS	2013247001	47" (119.38)	35-3/4" (90.81)	1	43" (109.22)	6-3/16" (15.72)	18-1/8" (46.04)
DD35HS	2013335000	35" (88.90)	35-3/4" (90.81)	1	14-1/8" (35.88)	6-3/16" (15.72)	18-1/8" (46.04)
DD47HS	2013347000	47" (119.38)	35-3/4" (90.81)	1	20-1/8" (51.12)	6-3/16" (15.72)	18-1/8" (46.04)

**NOTE:** Metric dimensions are shown in centimeters.

Specifications may be improved and dimensions changed without prior notice.

## BLICKMAN BASE CABINETS, CONT.

### COUNTERTOP SPECIFICATIONS

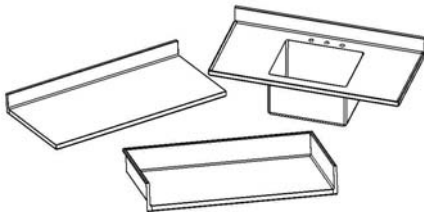
**MATERIALS** - Stainless Steel, Type 300 Series, nickel-bearing. Galvannealed steel.

**GAUGES** - 16 gauge throughout.

**CONSTRUCTION** - Countertops are fabricated in one piece, where possible, with welded corners, channel shaped exposed edges and reinforced with three full length hat shaped galvanneal channels. Sink bowls, where required, are constructed with fabricated covered corners. Back and/or end splashes are integral with top and covered at point of turn up to a 1/2" (1.27) radius. Exposed edges of sink tops are provided with integral inverted "V" nosing. After fabrication, a moisture proof, sound-deadening mastic is applied to the under-side of the top and outside of sink bowls.

**WELDING** - All welding accomplished by heli-arc method. All exposed welds ground smooth.

**FINISH** - All exposed surfaces are free of pit marks, weld seams and scale, and polished to a satin finish.



Model No.	Part No.	Width	Height	Cupboard Shelves	Drawer Length	Drawer Height	Drawer Depth
DG35HS	2013435000	35" (88.90)	35-3/4" (90.81)	1	14-1/8" (35.88)	6-3/16" (15.72)	18-1/8" (46.04)
DG47HS	2013447000	47" (119.38)	35-3/4" (90.81)	1	20-1/8" (51.12)	6-3/16" (15.72)	18-1/8" (46.04)
<b>Drawer Housing</b>							
DH124S	2043424000	24" (60.96)	5" (12.70)	(1-drawer)	14-1/8" (35.88)	2-1/2" (6.35)	18-1/8" (46.04)
DH129S	2043429000	29" (73.66)	5" (12.70)	(1-drawer)	20-1/8" (51.12)	2-1/2" (6.35)	18-1/8" (46.04)
DH235S	2043435000	35" (88.90)	5" (12.70)	(2-drawer)	14-1/8" (35.88)	2-1/2" (6.35)	18-1/8" (46.04)
DH247S	2043447000	47" (119.38)	5" (12.70)	(2-drawer)	20-1/8" (51.12)	2-1/2" (6.35)	18-1/8" (46.04)
DJ35HS	2013535001	35" (88.90)	35-3/4" (90.81)	1	14-1/8" (35.88)	2-1/2" (6.35)	18-1/8" (46.04)
DJ47HS	2013547001	47" (119.38)	35-3/4" (90.81)	1	20-1/8" (51.12)	2-1/2" (6.35)	18-1/8" (46.04)
DK35HS	2013535000	35" (88.90)	35-3/4" (90.81)	1	14-1/8" (35.88)	6-3/16" (15.72)	18-1/8" (46.04)
DK47HS	2013547000	47" (119.38)	35-3/4" (90.81)	1	20-1/8" (51.12)	6-3/16" (15.72)	18-1/8" (46.04)
DP35HS	2013735000	35" (88.90)	35-3/4" (90.81)	0	31" (78.74)	6-3/16" (15.72)	18-1/8" (46.04)
DP47HS	2013647000	47" (119.38)	35-3/4" (90.81)	0	43" (109.22)	6-3/16" (15.72)	18-1/8" (46.04)
DR35HS	2013635000	35" (88.90)	35-3/4" (90.81)	0	14-1/8" (35.88)	6-3/16" (15.72)	18-1/8" (46.04)
DR47HS	2013747000	47" (119.38)	35-3/4" (90.81)	0	31" (78.74)	6-3/16" (15.72)	18-1/8" (46.04)
					20-1/8" (51.12)	6-3/16" (15.72)	18-1/8" (46.04)
DR47HS	2013747000	47" (119.38)	35-3/4" (90.81)	0	43" (109.22)	6-3/16" (15.72)	18-1/8" (46.04)
					43" (109.22)	6-3/16" (15.72)	18-1/8" (46.04)
DT35HS	2013835000	35" (88.90)	35-3/4" (90.81)	0	14-1/8" (35.88)	6-3/16" (15.72)	18-1/8" (46.04)
DT47HS	2013847000	47" (119.38)	35-3/4" (90.81)	0	20-1/8" (51.12)	6-3/16" (15.72)	18-1/8" (46.04)
ES35HS	2013735001	35" (88.90)	35-3/4" (90.81)	0	31" (78.74)	2-1/2" (6.35)	18-1/8" (46.04)
ES47HS	2013747001	47" (119.38)	35-3/4" (90.81)	0	31" (78.74)	6-3/16" (15.72)	18-1/8" (46.04)
					43" (109.22)	2-1/2" (6.35)	18-1/8" (46.04)
ES47HS	2013747001	47" (119.38)	35-3/4" (90.81)	0	43" (109.22)	6-3/16" (15.72)	18-1/8" (46.04)
					43" (109.22)	6-3/16" (15.72)	18-1/8" (46.04)
FC35HS	2013235002	35" (88.90)	35-3/4" (90.81)	0	14-1/8" (35.88)	2-1/2" (6.35)	18-1/8" (46.04)
FC47HS	2013247002	47" (119.38)	35-3/4" (90.81)	0	14-1/8" (35.88)	6-3/16" (15.72)	18-1/8" (46.04)
					31" (78.74)	6-3/16" (15.72)	18-1/8" (46.04)
					20-1/8" (51.12)	2-1/2" (6.35)	18-1/8" (46.04)
					20-1/8" (51.12)	6-3/16" (15.72)	18-1/8" (46.04)
FC47HS	2013247002	47" (119.38)	35-3/4" (90.81)	0	43" (109.22)	6-3/16" (15.72)	18-1/8" (46.04)
					43" (109.22)	6-3/16" (15.72)	18-1/8" (46.04)

**NOTE:** Metric dimensions are shown in centimeters.

Specifications may be improved and dimensions changed without prior notice.



**HIGH CABINETS**

**MATERIALS** - Stainless Steel, Type 300 Series, nickel-bearing, 1/4" (0.64) thick clear tempered glass.

**GAUGES** - Body, shelves, outer door pan or frame -18 gauge. Inner door pan or inserts - 20 gauge. Base -16 gauge. Leveling gussets -12 gauge.

**CONSTRUCTION** - Cabinets are constructed as floor and wall supported, individual cases with finished sides, designed to accommodate five adjustable shelves. Cabinets are provided with applied channel shaped bases, incorporating toe space recesses approximating 3" (7.62) deep and 4" (10.16) high. Gussets with leveling bolts are welded into the corners, accessible through button covered holes punched in the cabinet bottoms. Bases can be omitted when conditions dictate. Shelves are constructed with channel shaped and a flanged edge, adjustable on 1/2" (1.27) centers the full height of the cabinets. Solid doors are double wall, telescoping pans with interior channel reinforcing between pans. Glazed doors are double shell design, with a one-piece outer frame, die-formed to receive a rubber gasketed glass panel, held in place by removable insert strips. Doors are available either hinged or sliding, with hinged doors hung on three semi-concealed stainless steel hinges. Right hand hinged doors fitted with two point up and down knob latching, left hand doors with astragal, dummy knob and spring loaded nylon roller catch. Sliding doors are provided with semi-concealed, ball bearing sheaves set into the bottom edges of the doors, riding in stainless steel tracks top and bottom. Door frames are fitted with die-formed recessed pulls welded in place.

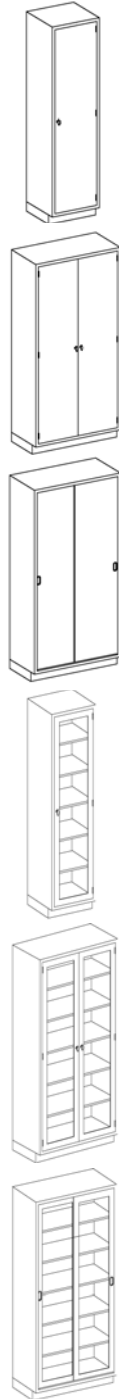
**WELDING** - All welding accomplished by heli-arc method. All exposed welds ground smooth.

**FINISH** - All exposed surfaces are free from pit marks, weld seams and scale, and polished to a satin finish.

**OPTIONS** - Sloping tops, additional shelves.

*Double-door cabinets are also available in 29" and 41" widths—consult factory.*

**BLICKMAN HIGH CABINETS** offer double walled solid doors for added strength and sound deadening for optimal performance. Sliding doors ride quietly on noiseless ball bearing rollers. Recessed base allows for convenient 3" x 4" toe space for easy access to cabinet. Bases can be eliminated when cabinet is recessed or other base is used.



Model No.	Part No.	Width	Height	Depth	Shelves
H18HAS	2030418000	18-3/4"(47.63)	84"(213.36)	18"(45.72)	5
H18HBS	2030418230	18-3/4"(47.63)	84"(213.36)	23"(58.42)	5
H24HAS	2030424000	24-3/4"(62.87)	84"(213.36)	18"(45.72)	5
H24HBS	2030424230	24-3/4"(62.87)	84"(213.36)	23"(58.42)	5
I35HAS	2030435000	35"(88.90)	84"(213.36)	18"(45.72)	5
I35HBS	2030435230	35"(88.90)	84"(213.36)	23"(58.42)	5
I47HAS	2030447000	47"(119.38)	84"(213.36)	18"(45.72)	5
I47HBS	2030447230	47"(119.38)	84"(213.36)	23"(58.42)	5
J35HAS	2030535180	35"(88.90)	84"(213.36)	18"(45.72)	5
J35HBS	2030535232	35"(88.90)	84"(213.36)	23"(58.42)	5
J47HAS	2030547180	47"(119.38)	84"(213.36)	18"(45.72)	5
J47HBS	2030547232	47"(119.38)	84"(213.36)	23"(58.42)	5
K18HAS	2030518000	18-3/4"(47.63)	84"(213.36)	18"(45.72)	5
K18HBS	2030518230	18-3/4"(47.63)	84"(213.36)	23"(58.42)	5
K24HAS	2030524000	24-3/4"(62.87)	84"(213.36)	18"(45.72)	5
K24HBS	2030524230	24-3/4"(62.87)	84"(213.36)	23"(58.42)	5
L35HAS	2030535000	35"(88.90)	84"(213.36)	18"(45.72)	5
L35HBS	2030535230	35"(88.90)	84"(213.36)	23"(58.42)	5
L47HAS	2030547000	47"(119.38)	84"(213.36)	18"(45.72)	5
L47HBS	2030547230	47"(119.38)	84"(213.36)	23"(58.42)	5
M35HAS	2030635000	35"(88.90)	84"(213.36)	18"(45.72)	5
M35HBS	2030635230	35"(88.90)	84"(213.36)	23"(58.42)	5
M47HAS	2030647000	47"(119.38)	84"(213.36)	18"(45.72)	5
M47HBS	2030647230	47"(119.38)	84"(213.36)	23"(58.42)	5

**Options:** *Sloping tops available for all models. Choice of solid or glass-hinged doors; sliding glass or solid doors; additional shelves.*

*Shelves are adjustable in 1/2" increments. It is recommended that these cabinets be securely anchored to adjacent surfaces. Custom Designs available on request.*

**NOTE:** *Metric dimensions are shown in centimeters.*

*Specifications may be improved and dimensions changed without prior notice.*



## WALL CABINETS

**MATERIALS** - Stainless Steel, Type 300 Series, nickel-bearing, 1/4" (0.64) thick, clear tempered sheet glass.

**GAUGES** - Body, shelves, outer door pan or frame-18 gauge. Inner door pan or inserts-20 gauge.

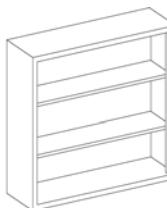
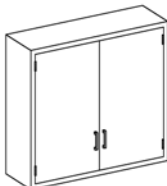
**CONSTRUCTION** - Cabinets are constructed as individual free standing units, with finished sides and bottom and rabbeted openings for doors. A recessed pan back, 3/4" (1.90) deep, is incorporated to facilitate installation. Shelves are constructed with channel shaped and a flanged edge, adjustable on 1/2" (1.27) centers the full height of the cabinet. Solid doors are double wall, telescoping pans with channel reinforcing between pans. Glazed doors are double-shell design, with a one-piece outer frame, die-formed to receive a rubber-gasketed glass panel. Doors are available either hinged or sliding, with hinged doors hung on semi-concealed stainless steel hinges and fitted with die cast aluminum bar pulls and spring loaded nylon roller catches. Sliding doors are suspended from overhead, self lubricating, noiseless, ball bearing rollers, and ride in stainless steel guide strips, fitted with die formed, recessed pulls welded in place. Narcotic locker cabinet is constructed as above, with a single wall, pan shaped door provided behind the outer double wall door, each furnished with its own non-duplicable, individually keyed lock.

**WELDING** - All welding accomplished by heli-arc method. All exposed welds ground smooth.

**FINISH** - All exposed stainless steel surfaces are free from pit marks, weld seams and scale, and polished to a satin finish.

**OPTIONS** - Sloping tops, additional shelves, glass shelves. Wall cabinets are also available in 29" and 41" widths—consult factory.

**WALL CABINETS** are designed for flush face construction with a recessed back panel for uneven wall surfaces. Solid doors are double walled for added strength and sound deadened for optimal performance. Sliding doors ride quietly on noiseless ball bearing rollers.



Model No.	Part No.	Width	Height	Depth	Shelves
A18LS	2020218000	18-3/4"(47.63)	30"(76.20)	13"(33.02)	2
A18MS	2020218360	18-3/4"(47.63)	36"(91.44)	13"(33.02)	2
A18HS	2020218480	18-3/4"(47.63)	48"(121.92)	13"(33.02)	3
A24LS	2020224000	24-3/4"(62.87)	30"(76.20)	13"(33.02)	2
A24MS	2020224360	24-3/4"(62.87)	36"(91.44)	13"(33.02)	2
A24HS	2020224480	24-3/4"(62.87)	48"(121.92)	13"(33.02)	3
B35LS	2020235000	35"(88.90)	30"(76.20)	13"(33.02)	2
B35MS	2020235360	35"(88.90)	36"(91.44)	13"(33.02)	2
B35HS	2020235480	35"(88.90)	48"(121.92)	13"(33.02)	3
B47LS	2020247000	47"(119.38)	30"(76.20)	13"(33.02)	2
B47MS	2020247360	47"(119.38)	36"(91.44)	13"(33.02)	2
B47HS	2020247480	47"(119.38)	48"(121.92)	13"(33.02)	3
D18LS	2020318000	18-3/4"(47.63)	30"(76.20)	13"(33.02)	2
D18MS	2020318360	18-3/4"(47.63)	36"(91.44)	13"(33.02)	2
D18HS	2020318480	18-3/4"(47.63)	48"(121.92)	13"(33.02)	3
D24LS	2020324000	24-3/4"(62.87)	30"(76.20)	13"(33.02)	2
D24MS	2020324360	24-3/4"(62.87)	36"(91.44)	13"(33.02)	2
D24HS	2020324480	24-3/4"(62.87)	48"(121.92)	13"(33.02)	3
E35LS	2020335000	35"(88.90)	30"(76.20)	13"(33.02)	2
E35MS	2020335360	35"(88.90)	36"(91.44)	13"(33.02)	2
E35HS	2020335480	35"(88.90)	48"(121.92)	13"(33.02)	3
E47LS	2020347000	47"(119.38)	30"(76.20)	13"(33.02)	2
E47MS	2020347360	47"(119.38)	36"(91.44)	13"(33.02)	2
E47HS	2020347480	47"(119.38)	48"(121.92)	13"(33.02)	3
F35LS	2023035000	35"(88.90)	30"(76.20)	13"(33.02)	2
F35MS	2023035360	35"(88.90)	36"(91.44)	13"(33.02)	2
F35HS	2023035480	35"(88.90)	48"(121.92)	13"(33.02)	3
F47LS	2023047000	47"(119.38)	30"(76.20)	13"(33.02)	2
F47MS	2023047360	47"(119.38)	36"(91.44)	13"(33.02)	2
F47HS	2023047480	47"(119.38)	48"(121.92)	13"(33.02)	3
G35LS	2020435000	35"(88.90)	30"(76.20)	13"(33.02)	2
G35MS	2020435360	35"(88.90)	36"(91.44)	13"(33.02)	2
G35HS	2020435480	35"(88.90)	48"(121.92)	13"(33.02)	3
G47LS	2020447000	47"(119.38)	30"(76.20)	13"(33.02)	2
G47MS	2020447360	47"(119.38)	36"(91.44)	13"(33.02)	2
G47HS	2020447480	47"(119.38)	48"(121.92)	13"(33.02)	3

**Options:** Sloping tops available for all models - add suffix "ST" after model number.

**Contact factory to order.**

**NOTE:** Metric dimensions are shown in centimeters. Specifications may be improved and dimensions changed without prior notice. When ordering locking cabinets, please specify whether locks are to be keyed alike or independently.



**OPERATING ROOM CONSOLES**



**THE OPERATING ROOM CONSOLE** featured on this page typifies a combination of assembled, independent cabinet units. By adding or deleting units you can easily design other console arrangements. Select solid or glass doors with or without locks. Locks on cabinets can be keyed alike or independently. These cabinets can also be furnished as freestanding cabinets on optional, stainless-steel bases and/or with optional, stainless-steel sloping tops. Stainless-steel perimeter recessing trim may be purchased with all built-in installations.

Blickman prides itself on its factory-built, modular design concept for console cabinets, which offers virtually unlimited flexibility to successfully meet specific requirements, while reducing costs and standardizing quality. Moreover, all Blickman products come supported by its industry-unique Lifetime Limited Warranty. See the Blickman website ([www.blickman.com](http://www.blickman.com)) for warranty details.

**MATERIALS** - Stainless Steel, 300 Series, nickel-bearing, 1/4" (0.55) thick, clear tempered sheet glass.

**GAUGES** - Cabinet bodies and shelves-18 gauge. Drawers, doors and recessing trim-20 gauge.

**CONSTRUCTION** - Console consists of individual cabinets arranged in series to meet particular operating room needs. Cabinets are constructed with sides, backs, tops and bottoms welded into rigid, self supporting body shells, with facing joints welded, ground and polished, presenting a flush face, to which drawers and doors can be fitted in the same plane.

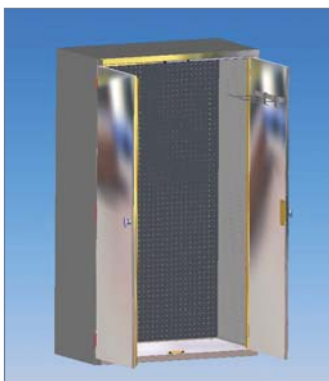
**WELDING** - All welding accomplished by heli-arc method. All exposed welds ground smooth.

**FINISH** - All exposed stainless steel surfaces are free of pit marks, weld seams and scale and polished to a satin finish.

**OPTIONS** - Recessing trim for built-in installations. Stainless steel bases and or sloping tops for free standing units. Locks on drawers and/or doors. Knob latching in lieu of dummy knobs. Solid stainless steel doors in lieu of glass.



**PASS-THROUGH VERSIONS** for built-in applications provide doors on the front and back of any console cabinet, except for Model DC-24. Now you can load warming cabinets from outside the surgical area and access contents from the inside.



**MODELS TA35 AND TA47 TABLE ACCESSORIES CABINETS** include a removable stainless pegboard for storing endoscopy equipment, OR table accessories.

Model No.	Part No.	Width	Height	Depth	Feature
TA35	1718235000	35" (88.90)	60" (152.40)	18" (45.72)	pegboard
TA47	1718247000	47" (119.38)	60" (152.40)	18" (45.72)	pegboard

Cabinet is furnished with solid, double pan doors, channel reinforced, hung on three semi-concealed stainless steel hinges. Right hand door fitted with two point up and down knob latching, left hand door with astragal, dummy knob and spring loaded nylon roller catch. Inner door panels are provided with 11 gauge channel brackets for the support of three removable and adjustable 1/4" (0.64) diameter stainless steel rod hooks per door. Cabinet interior, back and sides, are lined with a removable 18 gauge stainless steel pegboard.

**NOTE:** Metric dimensions are shown in centimeters.

Specifications may be improved and dimensions changed without prior notice.



**MODELS ES35 AND ES47 EQUIPMENT AND SUPPLIES CABINETS** include three adjustable shelves and provide plenty of storage space for supplies in this double door cabinet.

Model No.	Part No.	Width	Height	Depth	Shelves
ES35	1713735000	35" (88.90)	60" (152.40)	18" (45.72)	3
ES47	1713747000	47" (119.38)	60" (152.40)	18" (45.72)	3

Cabinet is furnished with glass hinged doors of double shell design, with one piece outer frames die-formed to receive rubber gasketed glass panels held in place by inner retaining strips. Doors operate on three semi-concealed stainless steel hinges. Right hand door fitted with two point up and down knob latching, left hand door with integral stops, dummy knob and spring loaded nylon roller catch. Cabinets are furnished with three stainless steel shelves, adjustable on 1/2" (1.27) centers.



**MODEL DC24 DESK CABINET** includes a fluorescent light fixture over a sloped writing surface, dry erase board and four drawers providing a generous work surface and storage area.

Model No.	Part No.	Width	Height	Depth	Drawers
DC24	1713224000	24-1/8" (61.28)	60" (152.40)	18" (45.72)	4

Cabinet consists of an open faced upper section, with sloped stainless steel writing surface, dry erase back panel and ceiling mounted fluorescent light fixture with ON - OFF switch, and a lower drawer section. Four drawers with double wall fronts, shall operate on side mounted, two-section, nylon ball bearing roller slides with built-in extension stops. Heads provided with die-cast aluminum bar pulls.



**MODEL MS24 MISCELLANEOUS SUPPLY CABINET** includes three adjustable shelves on a single door cabinet as a narrower alternative to the double door supply cabinet.

Model No.	Part No.	Width	Height	Depth	Shelves
MS24	1716724000	24-1/8" (61.28)	60" (152.40)	18" (45.72)	3

Cabinet is constructed similarly to the ES models above, but with a single glass hinged door, available either right or left hand hinged.



**MODELS SW30MG AND SW30MS DIGITAL WARMING CABINETS** are used for warming solutions or blankets. Temperature control from 90°F–160°F. Digital temperature display, equipped with visual and audible alarms and an automatic safety switch to prevent overheating. Keyed temperature lockout to satisfy JCAHO requirements. Fan for even heat distribution. UL listed and CUL certified. Designed for recessed installation, the most common application for this unit would be a built-in OR wall console. Available with glass or stainless steel door.

Model No.	Part No.	Width	Height	Depth	Shelves
SW30MG	14D9930200	30" (76.20)	60" (152.40)	18" (45.72)	4
SW30MS	14D9931200	30" (76.20)	60" (152.40)	18" (45.72)	4

**NOTE:** Metric dimensions are shown in centimeters.  
Specifications may be improved and dimensions changed without prior notice.